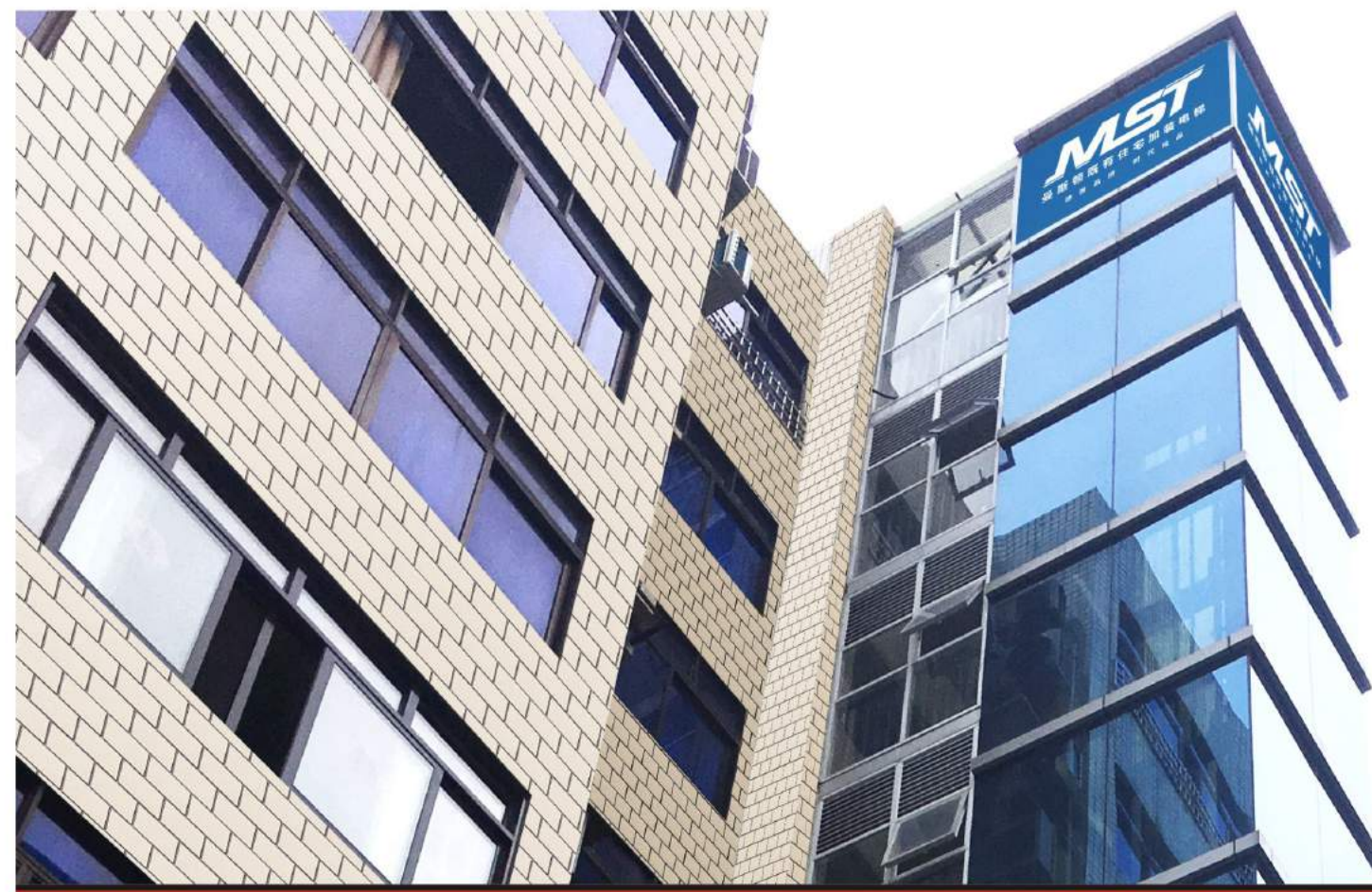


24小时全国服务热线 | 400-659-0900
24-hour National Service Hotline

设计印刷: H7 400+044+0093

德国
MST
MASTON



曼斯顿电梯（浙江）有限公司
MASTON ELEVATOR (ZHEJIANG) CO., LTD.

制造基地: 中国海宁高新技术产业园区春潮路15号
Manufacturing Base: No. 15, Chuncho Road, Haining Hi-tech
Industrial Park, China
销售热线(Sales hotline): +86-573-87961821转8053
传真(Fax): +86-573-87967022 邮编(Postcode): 314422
Http: www.maston.com.cn E-mail: info@maston.com.cn



扫描二维码
关注曼斯顿微信公众号



扫描二维码
关注曼斯顿电梯门户网站

曼斯顿电梯
MASTON
ELEVATOR

既有住宅加装电梯
EXISTING HOUSE WITH ELEVATOR

智能科技·智享生活
INTELLIGENT TECHNOLOGY AND INTELLIGENT LIFE

2019年3月份印刷

GREEN ERA INTELLIGENT FIRST

绿色时代 智能先行

健康与艺术的融合，彰显新时代绿色理念
人性化的生活享受，更科技的智能体验
MST电梯
关怀您的出行安全，给予您更多舒适享受

The fusion of health and art demonstrates the green concept of new era
Humanized life enjoyment, more scientific intelligent experience
MST elevator
Care about your travel security and give you more comfortable enjoyment





人脸识别

通过大数据分析、物联网技术，无需按键，通过人脸识别即可乘梯，曼斯顿倾力为您提供最优异的派梯服务。

Face recognition

With big data analysis and Internet of things technology, you can ride a ladder by face recognition without pressing a button, and MASTON strives to provide you with the best delivery service.



手机控制

系统以网络数据传输为通道，以手机APP与云后台服务器建立的数据传输平台，真正实现了“手机在手，畅行无阻”的现代化、信息化的开门和梯控方式。

Mobile control

The system takes network data transmission as the channel and takes the data transmission established by mobile APP and cloud background server as the platform to truly realize "mobile phone in hand, unhindered transit" modernization, information-based door opening and ladder control mode.



指纹控制

指纹控制是先进的生物科学技术。每个人的指纹都是独一无二的。指纹识别梯控能够更方便、安全的使用电梯；智能识别、操作便捷；授权进出指定楼层；保障隐私与安全性。

Fingerprint control

Fingerprint control is an advanced biological technology. Everyone's fingerprints are unique. The fingerprint identification technology can use the elevator more conveniently and safely; intelligent identification and convenient operation; authorization to enter and exit the designated floor; guarantee privacy and security.



安全舒适 人性化电梯科技

SAFE AND COMFORTABLE

Humanized elevator technology

通过细致的研究与精心设计，努力提升乘梯安全性、便利性和舒适性，灵活运用人性化的电梯科技，真正实现德国贵族品质的完美乘梯享受。

Through careful research and design, we strive to improve the safety, convenience and comfort of ladder riding. The flexible use of humanized elevator technology can truly achieve the realization of the German noble quality of the perfect elevator enjoyment.



先进技术 助力打造绿色建筑

USE ADVANCED TECHNOLOGY

to help build green buildings

各类先进节能及智能技术开发的运用，使电梯运行成本有效降低，客流运输更加高效顺畅，曼斯顿携手建筑开发商共同打造绿色建筑。
The application of various advanced energy-saving and intelligent technologies has effectively reduced the operation cost of elevators and made passenger flow transportation more efficient and smooth. MASTON has worked with construction developers to build green buildings.



能量回馈装置 (选配)

能量回馈技术的应用，实现电梯电能的循环利用，大幅降低能耗，助力城市建筑的绿色化发展。

Energy feedback device (optional)

The application of energy feedback technology can realize the recycling of elevator electric energy, greatly reduce energy consumption and facilitate the green development of urban buildings.



远程安全卫士 (选配)

引进远程监控物联网系统，实现对楼宇电梯全方位覆盖检测和管理，在故障发生之前及时排除隐患，大大提高售后服务效率和质量、提升电梯安全等级。

Remote security guard (optional)

The introduction of remote monitoring of the Internet of things system enables full coverage inspection and management of building elevators, which can remove hidden dangers in a timely manner before failure occurs, greatly improve after-sales service efficiency and quality, and improve elevator safety level.

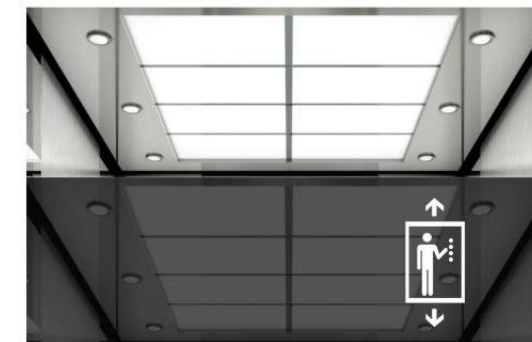


智能感应节能系统 (标配)

采用最先进的变频技术，照明、通风等可自动切换至待机模式，无人乘坐时有效节约更多能源。

Intelligent sensing energy saving system (standard)

Adopting the most advanced converter technology, lighting, ventilation and other technologies can be automatically switched to standby mode, effectively saving more energy when no one is riding.



电梯空调系统 (标配)

低噪音，高效运转，送风均匀，自动恒温，节省能源，冷量足，使轿厢内保持宁静、舒适。可根据轿厢内不同风格装饰，提供个性化豪华的风口装饰件。

Elevator air conditioning system (standard)

Low noise, high efficiency operation, uniform air supply, automatic constant temperature, energy saving, and sufficient cooling capacity to keep the car quiet and comfortable. It can be decorated according to different styles in the car, providing individual and luxurious tuyere decoration pieces.

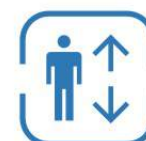


智能门禁系统 (选配)

搭载智能的门禁控制系统，按需要可以与楼宇入口、闸机和电梯系统整合，为各类商业楼的物业管理打造安全而智能的门禁方案。

Intelligent access control system (optional)

The access control system equipped with intelligent technology can be integrated with the building entrance, brake and elevator system as required to create a safe and intelligent access control scheme for property management of various commercial buildings.



目的选层系统 (群控时标配)

将目的地相近的乘客分配到同一部电梯，节约候梯时间，提高运载效率，大大缓解了上下班高峰期人流拥堵的状况。

Destination layer selection system (standard for group control)

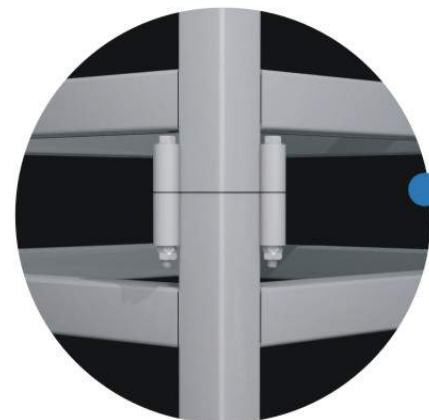
The allocation of passengers with similar destinations to the same elevator can save waiting time and improve delivery efficiency, greatly alleviates the congestion of rush hour.



风格各异，安心乘坐

DIFFERENT STYLES

Peace of mind



顶结标准化生产

中间层
钢结构组装

首结标准化生产

厅门装潢一体化生成
现场拼接



可靠的钢结构井道

Reliable steel structure hoistway

- 施工时间
1天可完成钢结构安装，8天内工程项目完工
- 防锈处理
除锈，除油，13道工序，电泳浸漆（国内首创）
- 井道尺寸
优化设计，占地小，对低层住户采光影响小
- Construction time
Steel structure installation completed in 1 day, and the project
- Anti-rust treatment
Rust removal, degreasing, 13 procedures, electrophoretic dipping (domestic initiative)
- Well size
Optimized design, small footprint, small impact on low-rise residential lighting

对比分析

曼斯顿模块化加装电梯	1天可完成钢结构安装，8天内工程项目完工	←	施工时间	→	15天以上钢架施工，至电梯交付1~2个月，严重影响小区居民正常生活	传统现场制作式加装电梯
	工厂内加工，保证焊接质量，现场只需螺栓连接	←	焊接质量	→	现场焊接，焊接质量难控制，有火源隐患	
	除锈，除油，电泳	←	防锈处理	→	直接喷/刷漆	
	占地小，对低层住户采光影响小	←	占地面积	→	占地大，施工场地占用多，影响居民生活	

丰富的外立面方案

RICH FACADE PROGRAM

玻璃幕墙 (可选)



全透明



超白透明



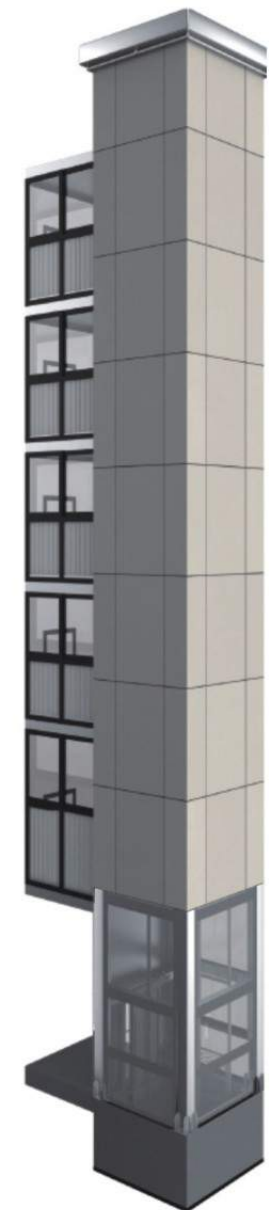
后侧观光井道



两侧观光井道



三侧观光井道



非观光井道

多样化方案 轻松安装 量身定制

DIVERSIFICATION SCHEME

Easy to install tailored

两种入户方式配合四种连接方式，满足复杂的现场情况。针对不同的客户需求，进行专业化的量身定制，让安装更轻松。
Two types of homes are combined with four connection methods to meet complex on-site conditions. Specialized tailoring for different customer needs makes installation easier.

入户方式：

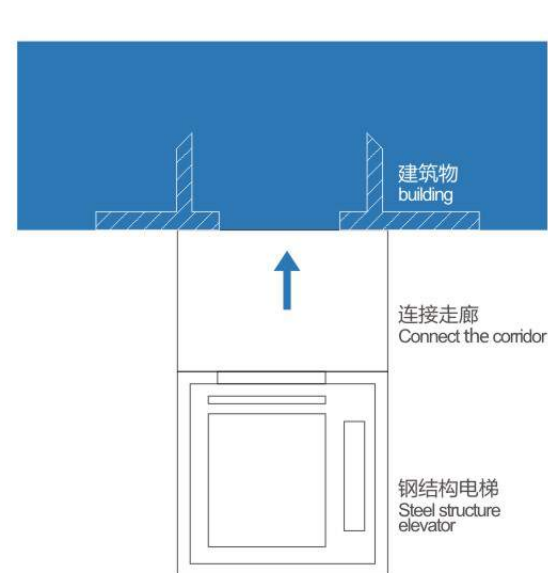
Way of entering home

平层入户、错半层入户
Flat-level households, half-floor homes

连接方式：

Connection method

单门无平台直连式、贯通门无平台直连式、直平台式、双跨耳平台式、侧平台式
Single door without platform direct connection, through door without platform direct connection, straight platform, double span platform, side platform

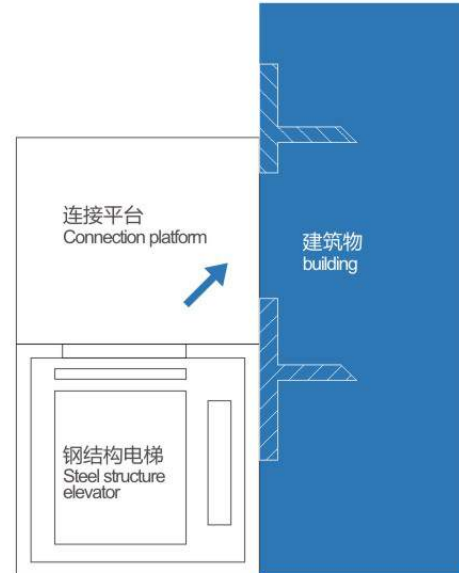


直走廊式

钢结构电梯连接建筑物外部的走廊，可减少建筑物内部空间占用。

Straight corridor

A steel structure elevator connects the corridor outside the building. Can reduce the internal space of the building.

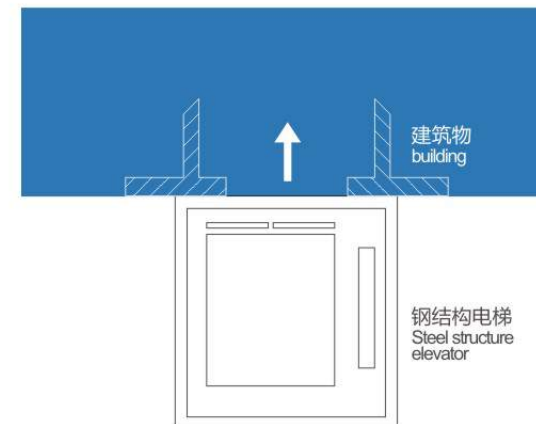


侧平台式

钢结构电梯连接建筑物侧面的平台，用户到达平台后即可直接进入建筑物内，可减少建筑物内部空间占用。

Side platform

A steel structure elevator connects the platform on the side of the building. Once the user arrives at the platform, they can enter the building directly. Can reduce the internal space of the building.

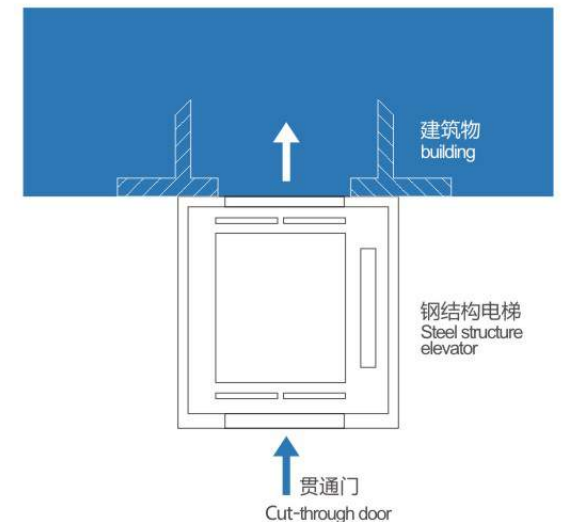


无平台直连式（单门）

原建筑物内部有可利用空间，用户可直接首层进入钢结构电梯，无需平台连接，单门进入。

Non platform direct connection (single door)

There is space available inside the original building. The user can enter the steel structure elevator directly on the first floor. Single door entry without platform connection.

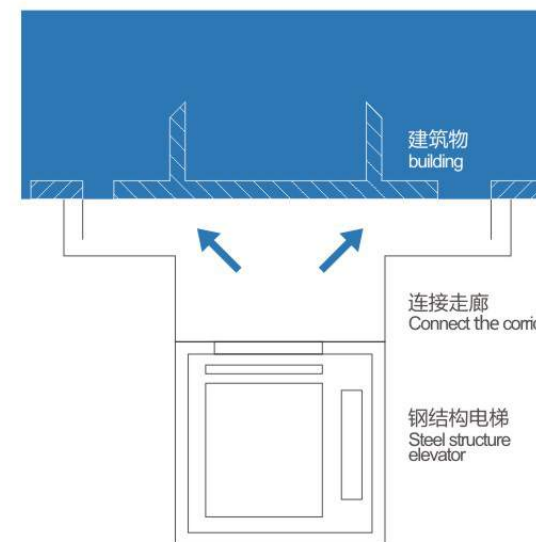


无平台直连式（贯通门）

原建筑物内部有可利用空间，无需平台连接，用户可直接首层进入钢结构电梯，并采用贯通门，电梯两侧用户均可使用。

Non platform direct connection (cut-through door)

There is space available inside the original building. No platform connection is required, and the user can directly enter the steel structure elevator on the first floor and adopt the through door. It can be used by both sides of the elevator.



双跨耳走廊式

钢结构电梯连接建筑物外部的走廊，从走廊左右两端均可进入建筑物内，可减少建筑物内部空间占用。

Double-ear corridor

A steel structure elevator connects the corridor outside the building. It can enter the building from both the left and right sides of the corridor. Can reduce the internal space of the building.



曼斯顿斯铂客系列标准轿厢配置 MASTON SPARKLE Series Standard Car Configuration



MST-KJ011 (标配Standars)

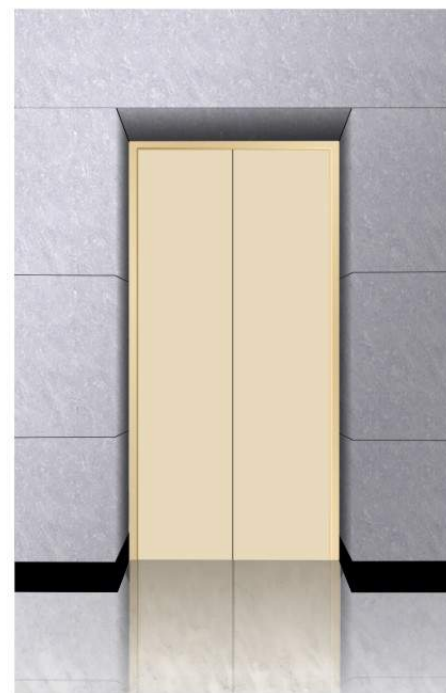
轿壁：发纹不锈钢
轿顶：喷涂钢板，LED照明
地板：PVC
轿门：发纹不锈钢

Car walls: hairline stainless steel
Suspended ceiling: spray steel plate, LED lighting
Floor: PVC
Car door: hairline stainless steel

层门 Landing door



MST-TM003



MST-TM010

层门门套：首层发纹不锈钢，其余各层钢板涂喷
Landing door jamb: the first layer is hairline stainless steel, and the remaining layers are steel plate spray

吊顶 Suspended ceiling

MST-DD01 (标配Standars)
喷涂钢板，LED照明
Spray steel plate, LED lighting



MST-DD04
喷涂钢板，LED照明
Spray steel plate, LED lighting



MST-DD05
喷涂钢板，中部LED照明亚克力板
Spray steel plate, in the middle, LED lighting acrylic board



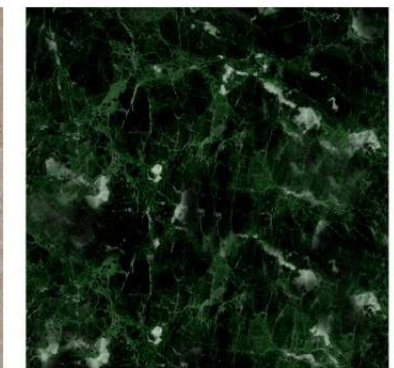
地板 Floor



MST-F007 标配Standard



MST-F008 标配Standard

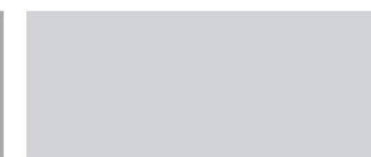


MST-F009 标配Standard

喷涂色卡 Spraying color swatches



MST-SK01 烟灰色 (层门、吊顶选用)



MST-SK04 极光银 (吊顶选用)



MST-SK05 象牙黄 (层门、吊顶选用)

注：图片系电脑绘制，可能与实际略有不同，以实物为准。
Note: Pictures drawn by computer, may be slightly different from the actual, in kind prevail.



操纵箱 Operation panel

注：图片系电脑绘制，
可能与实际略有不同，以实物为准。

Note: Pictures drawn by computer,
may be slightly different from the actual, in kind prevail.



MST-CZ012
镶嵌式操纵箱(标配)
Mosaic operation panel (standard)



MST-ZH012
有/无底盒单梯召唤
Single elevator with/without bottom box calling board



MSTZH-13106
有/无底盒并梯召唤
Double elevator with/
without bottom box calling board



MST-CZ003
镶嵌式操纵箱(标配)
Mosaic operation panel (standard)



MST-ZH003
有/无底盒单梯召唤
Single elevator with/without bottom box calling board



MSTZH-13104
有/无底盒并梯召唤
Double elevator with/
without bottom box calling board



MST-CZ007
镶嵌式操纵箱(标配)
Mosaic operation panel (standard)



MST-ZH007
有/无底盒单梯召唤
Single elevator with/without bottom box calling board



MSTZH-13107
有/无底盒并梯召唤
Double elevator with/
without bottom box calling board

功能表 The function table





标准功能 Standard Function

 运行功能 Running Function	电梯变频驱动 Elevator frequency conversion drive	精确调整电动机转速，令电梯启动、运行、停止时的速度曲线平稳、圆滑，获得良好的舒适感。 Accurately adjust the motor speed to make the speed curve more stable and smooth when the elevator starts, runs and stops, so as to obtain a good and comfort feeling.
	门机变频驱动 Frequency conversion gate operator	精确调整电动机转速，使门机的开启、关闭更轻柔灵敏。 Accurately adjust the motor speed to make the door machine open and close more gentle and sensitive.
	独立运行 Independent service	通过动作开关，使电梯不响应外召，仅响应轿内指令。 The elevator does not respond to external calls, only responds to the car instruction through the action switch.
	自动不停站通过 Pass without stopping automatically	当轿内挤满乘客或负载接近预定值，为保持最大运行效率，该轿厢将自动越过召唤层站。 When the car is packed with passengers or the load is close to the predetermined value, the car will automatically cross the call landing to maintain maximum operating efficiency.
	开门时间自动调整 Automatic opening time adjustment	按照层站召唤或轿厢召唤的区别，自动调整保持开门时间。 Adjust the opening time automatically according to the difference between landing call and car call.
	本层重开门 Open the door again at the floor	关门途中，可以按本层站召唤按钮使门重新开启。 When closing the door, you can press the call button of this landing to reopen the door.
	即时关门 Instant shutdown	电梯停站开门到位时，按下关门按钮，门立即被关闭。 When the elevator stops and the door are in place, press the close button and the door will be immediately closed.
	停梯开门 Stop the elevator and open the door	电梯减速平层，直到完全停稳后才开门。 The elevator slows to the leveling and doesn't open the door until it's fully stabilized.
	指令登记删除 Deletion of instruction registration	如按错了轿内楼层指令按钮，只要把同一按钮连接两次，就可取消已登记指令。 If you press the wrong floor instruction button in the car, you can cancel the registered instruction as long as you press the same button twice.
	防捣乱 Anti-trouble	当电梯轻载时出现超过三个指令时，为避免不必要停靠，轿厢内已登记的召唤将全部自动消除。 When the lift is light and there are more than three instructions, all registered calls in the car will be automatically eliminated to avoid unnecessary docking.
	直接停靠 Direct arrival	完全根据距离原则，平层无爬行，大大提高了运行效率。 According to the distance principle, leveling is not crawling, which greatly improves the operation efficiency.
	轿厢到站钟 Car arrival clock	装于轿顶的电子钟的钟声告知候梯的乘客电梯已到站。 The bell of an electronic clock in a car informs the passenger that the elevator has arrived.

 安全功能 Safety function	光幕保护 Infrared light curtain detector	门开启和关闭期间，用覆盖整个门高度的红外光探测乘客和物体的门保护装置。 This device is a door protection device that detects passengers and objects with an infrared light screen covering the entire height of the door during the opening and closing of the door.
	指定停靠 The specified dock	由于某种原因，电梯在目的层无法开门，电梯将关门运行至下一指定层楼。 For some reason, when the elevator fails to open on the destination floor, the elevator closes and runs to the next designated floor.
	超载停梯 Overload stop	轿厢超载时，鸣响蜂鸣器并停止于该层站。 When the car is overloaded, the buzzer is sounded and stops at the landing.
	防止失速内部计数器保护 Prevent stall internal counter protection	由于曳引钢丝绳打滑而无法正常运行时，电梯停止运行。 When the elevator fails to operate normally due to slippage of the drawn wire rope, the elevator stops running.
	启动保护控制 Start protection control	电梯启动后在指定的时间内，没有离开门区，电梯停止运行。 After the elevator starts, if the elevator does not leave the gate area within the specified time, the elevator stops running.
	检修操作 Maintenance operations	当进入检修状态时，轿厢以低速点动运行。 When in the inspection operation, the car is operated at low speed.
	故障自诊断 Fault self-diagnosis	控制器可记录最新的21个故障，以便快速排除故障，迅速恢复电梯运行。 The controller can record the latest 21 faults for quick troubleshooting and quick recovery of elevator operation.
	电梯门重复开关 Repeat opening and closing of elevator doors	有时因阻碍或干扰，电梯门未能关闭，电梯门会重复打开或关闭，直到杂物被清除。 Sometimes the door will be opened or closed repeatedly due to failure or interference until the debris is cleared.
	上下越层及上下极限保护装置 Upper and lower jump layers and upper and lower limit protection devices	该装置可有效地防止当电梯万一发生失控时的冲顶或撞底现象，使电梯更安全可靠。 The device can effectively prevent the collision or floor collision when the elevator is out of control, making the elevator safer and more reliable.
	下行超速保护装置 Downside over-speed protection device	当电梯下降运行的速度超过额定速度的1.2倍时,该装置自动切断控制电源，使电机停止运转以阻止电梯超速下行；如电梯继续超速下行，在其速度达到国家标准规定值前，安全钳动作，强制电梯停止运行，保证安全。 When the descending speed of the elevator exceeds 1.2 times of the rated speed, the device automatically cuts off the control power and stops the motor to stop the elevator from speeding down. If the elevator continues to over-speed and go down, before its speed reaches the national standard, the safety clamp action can force the elevator to stop running and ensure safety.
	上行超速保护装置 Upward over-speed protection device	当电梯上行的速度超过额定速度的1.2倍时，该装置自动将电梯减速或制停。 When the upward speed of the elevator exceeds 1.2 times the rated speed, the device will automatically slow down or stop the elevator.

 人机界面 Human-machine Interface	轿内及层站微动指令按钮 Micro instruction button in car and landing	轿内操纵箱指令按钮及层站召唤按钮采用新型微动型按钮。 The command button of the operation panel in the car and the call button of the landing adopt the new micro button.
	轿内层楼、方向指示 Floor and direction indication in the car	轿内显示电梯所在层楼及当前运行方向。 The car inside shows the elevator floor and the current direction of operation.
	层站层楼、方向指示 Landing, floor level and direction indication	层站显示电梯所在层楼及当前运行方向。 Landing shows elevator floor and current operation direction.

 应急功能 Emergency Function	应急照明 Emergency lighting	停电时，自动打开轿内应急照明。 When the power is off, the emergency lighting in the car will be automatically turned on.
	点动运行 Inching operation	当进入紧急电动状态时，轿厢以低速点动运行。 When entering the state of emergency, the car is operated at a low speed.
	五方通话装置 Five-way communication device	通过对讲机，可让轿内、轿顶、电梯机房、井道底坑、救援值班室之间通话。 Through the intercom, the communication can be made between the car, car roof, the elevator machine room, the pit of the well and the rescue duty room.
	警铃 Alarm	紧急时，连续按下轿内操纵箱上的警铃按钮，安装于轿厢顶上的电铃会鸣响。 In an emergency, if the alarm button on the operation panel in the car is pressed continuously, the electric bell mounted on the top of the car will ring.
	消防返回 Fire return	启动基站或监控屏上的钥匙开关，所有召唤均被取消，电梯立即驶往指定救援层站停靠，并自动开门。 When the key switch on the main landing or monitoring screen is activated, all calls are cancelled. The elevator will immediately stop at the designated rescue landing and close the door automatically.


 节能功能 Energy Saving	轿厢风扇/照明自动开关 Automatic opening and closing of car fans or lighting	在规定的时间内没有召唤或指令信号，轿厢内的风扇和照明会自动关闭，以节能。 If there is no call or instruction information within the specified time, the fan and lighting in the car will be automatically closed to save energy.
	远程关闭 Remote shut down	通过钥匙开关，电梯可以被召唤到基站（服务完成后），并自动退出服务。 With the key switch, the elevator can be called to the main landing (after the service is completed) and exit the service automatically.

选配功能 Optional Function

 应急功能 Emergency Function	停电应急平层 Emergency leveling when power cut	正常电源断电时，充电式电池提供电梯电源，电梯驶往最近层站。 When the normal power is cut off, the rechargeable battery supplies the power to the elevator, which goes to the nearest landing.
---	---	--

 运行功能 Running Function	提前开门 Open the door ahead of time	电梯减速进入开门区域，自动开门，提高运行效率。 When the elevator slows down to enter the open area, the door will be opened automatically to improve operation efficiency.
	群控功能 Group automatic operation	用于三台或三台以上同型号电梯成组控制时使用，使梯群能自己选择最合适的应答，避免电梯重复停梯，缩短乘客候梯时间，提高运行效率。 This function is used for group control of three or more elevators of the same type, so that the elevator group can select the most appropriate response by itself, avoid repeated parking of elevators, shorten the waiting time of passengers, and improve operation efficiency.
	并联功能 Interconnect elevator	用于两台同型号电梯，通过电脑的调度来统一响应召唤信号，以最大限度地减小乘客的候梯时间，以提高运行效率。 This function is used for two elevators of the same type, which can respond to the call signal uniformly through the dispatch of the elevator, so as to minimize the waiting time of passengers and improve the operation efficiency.
	上班高峰服务 Peak hours' service	在预定上班时间内，基站向上的运输特别繁忙时，向基站不断派梯以满足上班时高峰需要。 During the scheduled working time, when the upward transportation of the main landing is particularly busy, send elevators to the main landing continuously to meet the peak demand of work.
	下班高峰服务 Off-peak service	在预定下班时间内，向顶层派梯满足下班时高峰需要。 Assign elevators to the top floor during scheduled off-duty hours to meet off-duty peak demand.
	开门时间延长 Longer opening time	按轿厢内的专用按钮，可使门在一段时间内保持开门状态。 Press the special button in the car to keep the door open for a period of time.

 人机界面 Human-machine Interface	语音报站 Voice broadcast station	在正常运行到站的情况下，利用语音装置告知乘客有关信息。 When the elevator is in normal operation and arrives at the station, it will inform the passenger about the information through the voice device.
	轿厢副操纵箱 The secondary Operation panel	用于大载重量电梯或候梯人群稠密大楼中的电梯，以便让轿厢内更多的乘客方便使用。 It is used in large load elevators or elevators in crowded buildings, so that more passengers in the cars can use it easily.
	残疾人操纵箱 The Disabled people Operation panel	便于让轿厢内坐轮椅的乘客及视觉障碍的乘客方便使用。 It is convenient for passengers in wheelchairs and those with visual impairment to use.
	智能召唤服务 Intelligent call service	通过专用的智能输入设备，可使轿厢指令或厅外召唤锁定或接通。 Through the special intelligent input device, can lock or connect car command or hall call.
	IC卡控制功能 Control function of IC card	所有（部分）层站须经授权，方可通过IC卡输入轿厢指令运行电梯。 All (part) landings must be authorized to enter car instruction through IC card to operate the elevator.

 监控功能 Monitor function	远程监控 Remote monitoring	通过调制解调器和电话，可实现电梯的远程监视和控制，便于厂家和服务单位及时的了解每台电梯的运行状况，以便及时作出相应措施。 By modulating regulator and telephone, remote monitoring and control of elevator can be realized, so that manufacturers and service units can know the operation status of each elevator in a timely manner, so as to make corresponding measures in a timely manner.
	远程控制 Remote control	通过操作监控屏（可选择），可使电梯按指定的需要作独立运行。 Through the operation monitoring screen (optional), the elevator can be used to operate independently according to the specified requirements.
	轿内摄像功能 The photography function in the car	摄像头装于轿厢内监视轿内情况。 The camera is mounted inside the car to monitor the situation inside the car.



注: 土建及参数表仅供参考。Note: the list of civil works and parameters is for reference only.



注: 土建及参数表仅供参考。Note: the list of civil works and parameters is for reference only.



曼斯顿服务·周到·及时·全面

MASTON SERVICE

Is thoughtful, timely and comprehensive

曼斯顿3T服务计划

对曼斯顿电梯来说，服务和产品同样重要。服务是我们得以长期立足市场的优势。曼斯顿3T服务理念，从客户需求出发，确保每台设备持久安全、稳定地运行。

MASTON 3T service plan

Service and product are equally important to the MASTON elevator. Service is our long-term advantage in the market. MASTON 3T service concept is based on customer demand to ensure the durable, safe and stable operation of each device.

周到——于细节中处处为您着想

曼斯顿电梯可根据客户的实际需求，针对客户所采购电梯的使用情况对电梯进行定期检测和维保服务，有效排除电梯安全隐患，确保曼斯顿电梯品质无忧。

Thoughtful-Think about you in detail

According to the actual needs of customers, MASTON elevator can be regularly tested and maintained for the use of the elevators purchased by customers, which can effectively eliminate potential safety hazards and ensure the quality of MASTON elevators.



及时——于危机关头及时为你服务

曼斯顿电梯开通服务专线，客户可通过拨打400服务热线或登陆网上在线服务平台，及时联系总部或当地驻点维保团队，以24小时的在线服务和30分钟内的到场承诺，为客户提供最及时的服务。

Timely-Serve you in a timely manner in a crisis

MASTON elevator has opened a special service line, and customers can call the 400 service hotline or log on the online service platform, timely contact the headquarters or local resident point maintenance team, with 24 hours of online service and 30 minutes of presence commitment, to provide customers with the most timely service.



全面——于服务中争取面面俱到

曼斯顿电梯在“售前、售中、售后”的三阶段服务模式，以完善的服务网络和健全的配件供应渠道，全程为客户提供优质的服务。

Comprehensive-Strive for everything in service

MASTON elevator is divided into "pre-sale, in-sale and after-sale" three-stage service mode, with a perfect service network and a sound supply channel of spare parts, providing customers with high-quality services throughout.

